



insights for the life of your business™

MAS 500

WEB-BASED REPORTING

All Engineering Change Management (ECM) reports can be generated and viewed through Microsoft Internet Explorer with our Web Reports module, at the same high level of security as with the module's standard output.

REPORTING FEATURES

- Maintain custom form layouts for printed forms used throughout all MAS 500 modules.
- Tailor forms to your organization's design requirements.
- Export all report data to an external file. Data types supported include ASCII text, delimited, Excel, Lotus 1-2-3, HTML, RTF, or Microsoft Word.
- Output any report to the screen, a printer or a variety of file formats.
- Create customized, presentation-quality reports through Crystal Reports software.

REPORTS

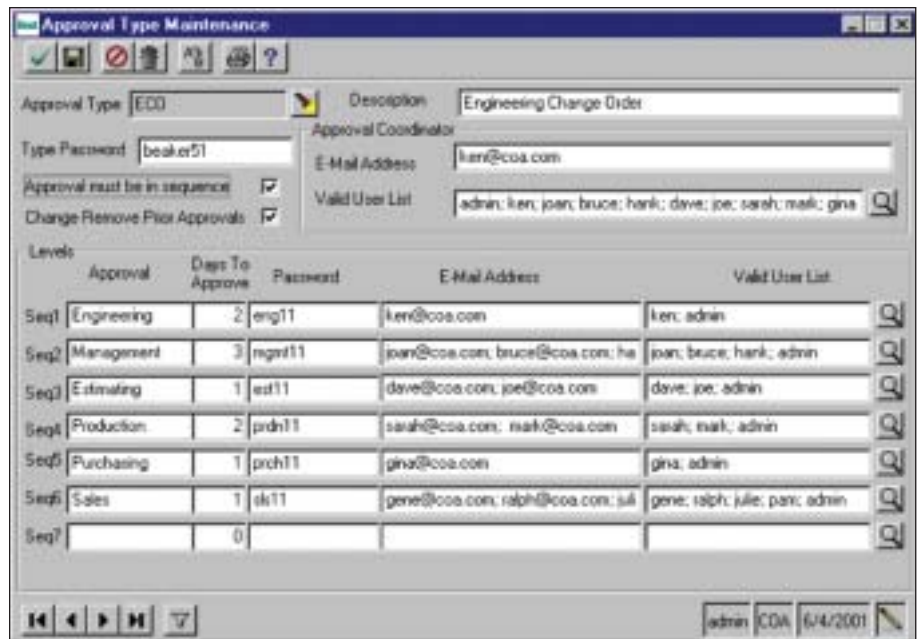
- ECM Approvals (e-mail-based alert)
- Past Due ECM Approvals
- Approval Type Listing

MAS 500 SOLUTIONS

- CRM and E-business
- Financials and Project Accounting
- Distribution and Manufacturing
- Human Resources and Payroll
- Customization



ENGINEERING CHANGE MANAGEMENT



Improve Engineering Management Through E-mail Notifications and Standardized Approval Processes

Quality control is one of the most important business concerns for manufacturers. Best Software can help you control production costs by producing quality parts for your most demanding customers.

Labor operations and material items are constantly changing as new items are developed and manufacturing processes are streamlined using newer equipment. Consequently, it is more important than ever before to standardize your engineering change management process.

MAS 500 integrates Engineering Change Management (ECM) with e-mail notifications providing instant visibility and standardized approval methods for routing and bill of material changes.

Any change made to an ECM-controlled routing and bill of material is routed via e-mail to members of an approval group. Each member has a specified amount of time to approve any engineering changes.

Engineering Change Management can also be used to track effective dates and retirement dates for each routing and bill of material.

Engineering Change Management is crucial to quality control and is a requirement for ISO and QS certification

