



insights for the life of your business™

MAS 500

WEB-BASED REPORTING

All Product Configurator reports can be generated and viewed through Microsoft Internet Explorer with our Web Reports module, at the same high level of security as with the module's standard output.

REPORTING FEATURES

- Maintain custom form layouts for printed forms used throughout all MAS 500 modules.
- Tailor forms to your organization's design requirements.
- Export all report data to an external file. Data types supported include ASCII text, delimited, Excel, Lotus 1-2-3, HTML, RTF or Microsoft Word.
- Output any report to the screen, a printer or a variety of file formats.
- Create customized, presentation-quality reports through Crystal Reports software.

REPORTING FEATURES

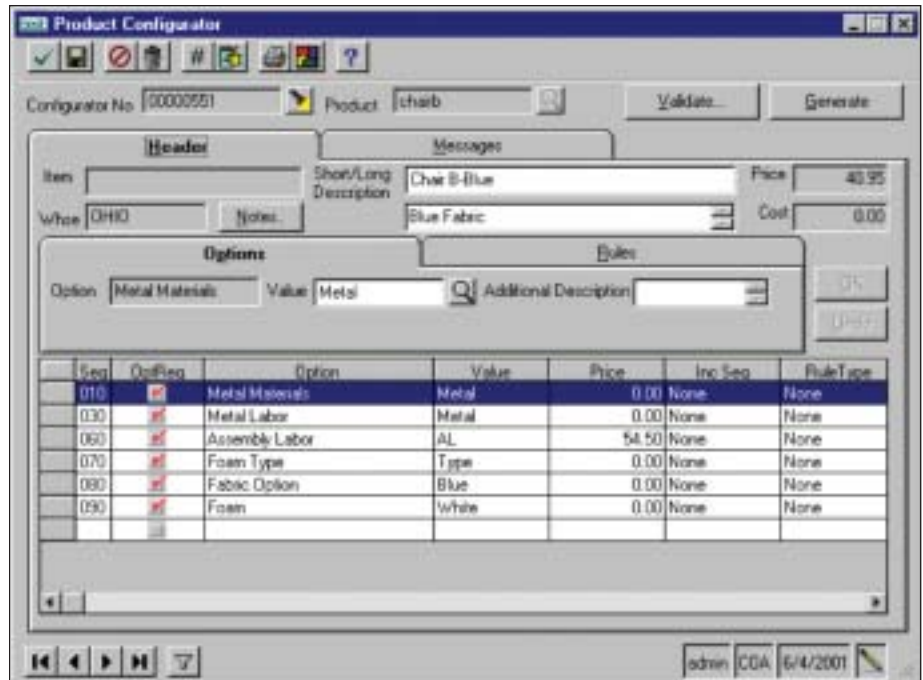
- Product Definition Report
- PC Options and Values Listing
- PC Item Where Used
- PC Module Options Listing
- PC Options Where Used

MAS 500 SOLUTIONS

- CRM and E-business
- Financials and Project Accounting
- Distribution and Manufacturing
- Human Resources and Payroll
- Customization



PRODUCT CONFIGURATOR



Advanced Product Configurator for Distributors and Manufacturers

MAS 500's Product Configurator was designed for use in either distribution or manufacturing environments. Customer service personnel benefit from an easy-to-use interface for feature/option selection, and integration with Sales Order entry.

This advanced solution is easy to set up and maintain. The intuitive user interface helps the user configure base products quickly using a double mouse-click or search function to choose pre-configured options for each customer order.

The Product Configurator builds new parts by starting with a base item and adding features or options to it. New items can be created on-the-fly using customized item masks, new long and short item descriptions, and other options.

Finished configurations contain unique routings and bills of material built during the configuration process. The Product Configurator also builds the item cost and suggested price.

Popular configurations are saved and reused as standard parts. All configurations are based on standard rules that limit or require certain features or options if another feature or option is selected. Final configurations can be validated to make sure that the final item can be produced.

