



insights for the life of your business™

MAS 500

WEB-BASED REPORTING

All Project Management reports can be generated and viewed through Microsoft Internet Explorer with our Web Reports module, at the same high level of security as with the module's standard output.

REPORTING FEATURES

- MAS 500 lets you tailor Project Management output forms to your organization's design requirements.
- Export all report data to an external file. Data types supported include ASCII text, delimited, Excel, Lotus 1-2-3, HTML, RTF, or Microsoft Word.
- Create customized presentation-quality reports with Crystal Reports software.

REPORTS

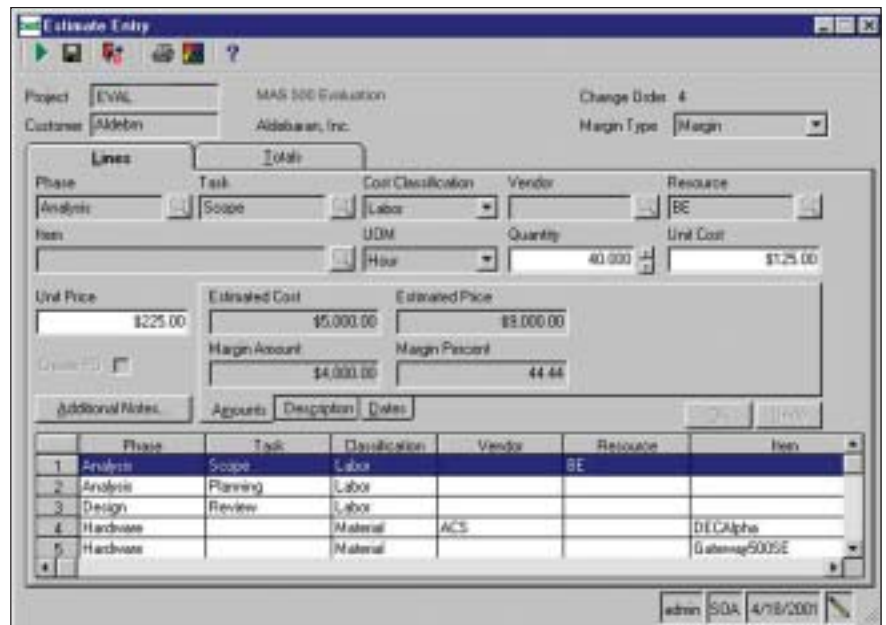
- Project Transaction Ledger
- Project Summary
- Committed Costs
- Inventory Transaction
- Project Profit and Loss
- Project Forecast Estimate
- Work In Progress
- Resource Utilization/Realization
- Timesheet and Expense Approval
- Project Chargeability
- Profit History

MAS 500 SOLUTIONS

- CRM and E-business
- Financials and Project Accounting
- Distribution and Manufacturing
- Human Resources and Payroll
- Customization



PROJECT MANAGEMENT FOR MANUFACTURERS



Profitably Manage All Aspects of Your Design, Manufacturing, Service and Installation Projects

Do you manage engineering or prototype production projects? Do you install or service the products you manufacture? If so, the MAS 500 Project Management solution can keep all of your project managers informed and equip them with the tools they need to profitably manage these projects.

By implementing this robust solution, you will enable your project managers to easily assign resources to projects, track actual versus estimated costs through project completion, and generate detailed estimates for customers. Projects can be based on a fixed price, by accounting for time and materials, or a combination of both options. Moreover, Project Management can be integrated with Microsoft Project, so you can leverage the strengths of both products to gain a comprehensive tool for managing all tasks, resources and schedules.

Another Project Management feature that is particularly important to manufacturers is the ability to manage a wide variety of project types. This flexibility can significantly decrease project management costs by eliminating the need for multiple project tracking systems. In addition, the six GAAP-compliant profit recognition methods enable you to control profit recognized over each period, resulting in a well-managed revenue stream.

Beyond its ability to manage manufacturing projects, Project Management also boasts a series of tools designed for businesses that install or service products. Time and materials can be instantly expensed throughout the installation or service processes. And eTimesheets, a browser based module, can be implemented to facilitate remote viewing and updating of a project's status.

continued on reverse



MAS 500

Project Management for Manufacturers

“MAS 500 was considerably more cost-effective than alternative solutions we reviewed. System maintenance requirements have been significantly decreased.”

*Guy DeMeester, Director of Global IS
Roxio, Inc.*

FEATURES:

Project Maintenance and Setup

Monitor all details of your project, including estimates, change orders, purchase orders, timesheets and billing.

- Choose from six GAAP-compliant profit recognition methods.
- Select from multiple project types: Time and Materials, Fixed Price, and Fixed Price Plus.
- Assign detailed employee contract rates at the project, project title, or resource level.
- Estimate multiple cost types through detailed estimating.
- Change or adjust estimates as needed.

Project Tracking Facilities

Prevent cost overruns and generate bottom-line savings.

- Look up profit recognition by item.
- Set up project classes for reporting purposes.
- Enter project, phase, and task start and end dates.
- Track both taxable and non-taxable projects.

Timesheet Processing

Process your time and materials against one or multiple projects.

- Manage remote entry via browser with eTimeSheets.
- Use either a worksheet or calendar style data entry option.
- Create user-defined timesheet periods.
- Assign contract rates based on project, resource, title, phase, task or date.

Expense Claim Processing

Input expenses electronically as they are incurred without the hassles of paper submission.

- Enable remote entry via browser with eTimesheets.
- Support both reimbursable and non-reimbursable expenses.
- Program optional management approval configurations.
- Generate accounts payable vouchers automatically.

Microsoft Project Link

Leverage the Microsoft Project facilities for developing time and resource plans by uploading directly to Project Management.

- Utilize the easy-to-use Project Management Estimate Wizard.
- Generate Microsoft Project Tasks from built-in Project Management Tasks.
- Reduce duplicate data entry.
- View Microsoft Project Tasks remotely with eTimesheets.
- Help facilitate project information in your company between finance and project managers.

Financial, Distribution and Manufacturing Integration

Enjoy a seamless integration to MAS 500 General Ledger, Accounts Receivable, Accounts Payable, Inventory, Purchase Order and MRP modules.

- Allocate accounts payable costs against projects.
- Generate vouchers from expense claims.
- Transfer inventory in and out of projects.
- Ship products from one location to another.
- Create purchase orders automatically for non-inventory items.
- Track purchase order commitments.
- Leverage MRP for Material Demands

Invoicing Features

Provide a wide range of invoicing and customization options to meet specific customer needs.

- Bill specific portions of a project or all of it.
- Customize unique invoice layouts per project.
- Bill customers by date, percentage, contract, or project.
- Print invoices in summary or detail.
- Display timesheet comments on the invoice.
- Track project retainability by amount or percentage.

Supplementary Features

Increase efficiency with these additional benefits.

- Employ user-defined fields.
- Alert facilities of workflow approvals and project scope changes.

Security

Set up security groups and assign access permissions that restrict access to confidential banking transactions and account information.

- Set up specific security groups, thus limiting or permitting access to a defined group of users.
- Establish access permissions such as display only, excluded, add/change/delete, or supervisory

Manufacturing

Manage projects from design and engineering and then turn on the powerful manufacturing modules for production management.

- Manage engineering, CAD design, and prototype construction using the project management system.
- Use the Material Requirements Planning module to manage purchasing, inventory transfers, and manufacturing work order creation for materials required on projects.
- Use the optional Light or Advanced Manufacturing modules to capture production costs including raw materials, component items, outside subcontracted operations, and manufacturing labor.